

## EU DECLARATION OF CONFORMITY

1. Product model: **MSPM-SHF-A-0.5**

2. Name and address of the manufacturer or his authorised representative:

MAGICSHOOT  
Reigerstraat 110  
2025 XG Haarlem  
The Netherlands  
[www.magicshoot.nl](http://www.magicshoot.nl)

3. This declaration of conformity is issued under the sole responsibility of the manufacturer (or installer).

4. Object of the declaration:

Equipment:

Powercable; International Extension Cord 16 A / 230VAC; constructed with: 1 meter Titanex H07RN-F 3G1,5mm<sup>2</sup> black cable and two connectors: Neutrik powerCON TRUE1 NAC3MX-W KERA F 622 Schuko Female.

Brand name: MagicShoot Cable

Model/type: **MSPM-SHF-A-0.5**

5. The object of the declaration described above is in conformity with the relevant Union harmonisation legislation:

Low Voltage Directive (LVD) 2014/35/EU,

Restriction of Hazardous Substances (RoHS) Directive 2011/65/EU,

Directive 2008/98/EC on waste (Waste Framework Directive)

6. References to the relevant harmonised standards used or references to the other technical specifications in relation to which conformity is declared:

LVD: NEN 3140+A1

RoHS: EN 50581:2012

7. Signed for and on behalf of:

Manufacturer: MagicShoot (phone: +31 6 21220846 email: [info@magicshoot.nl](mailto:info@magicshoot.nl))

Place and date: Haarlem, 16-02-2017



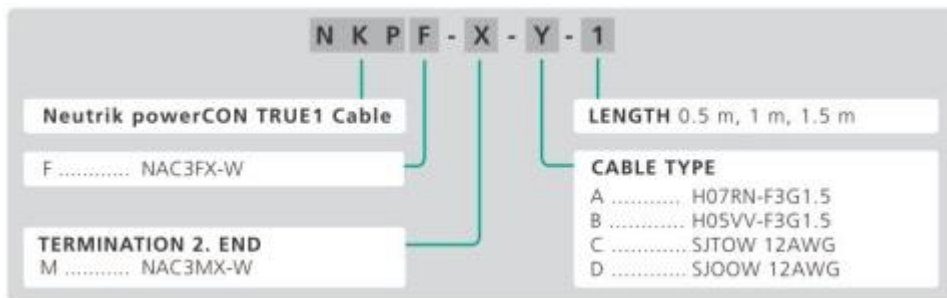
Sitan van Sluis, Managing Director

## International Extension Cord 16 A / 230VAC

<b>Plug / end termination</b>	Neutrik NAC3MX-W / KERAF Schuko 622
<b>Conductor size</b>	3 x 1,5 mm <sup>2</sup>
<b>Cable type / color / Nom. O.D.</b>	Titanex H07RN-F3G1.5 / black / 9,6 mm
<b>Part Number</b>	MSPM-SHF-A-0.5
<b>Length</b>	0.5 m
<b>Class</b>	I

### Partnumbering information

(following Neutrik part numbering)

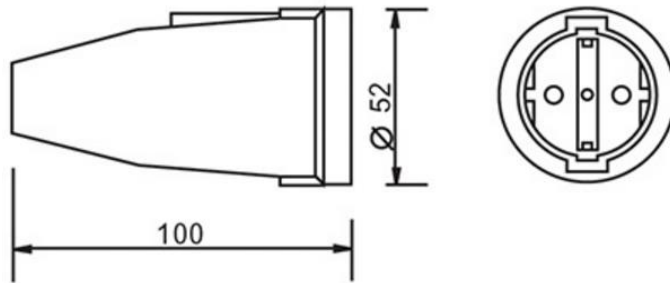


MagicShoot partnumber for two meter cable: **MSPM-SHF-A-0.5**

**SH** = schuko

**SHF** = schuko female

Schucko KERAF



## type 622

Rubber koppelcontactstop 10/16A, 250V~ 2 polig met randaarde  
(conform NEN 1020 en DIN 49440/441)

kleur : zwart

gewicht : 86 gr

### Eigenschappen:

- rubber mantel
- één-schroefstelsel
- polyamide binnenwerk
- vernikkelde contacten
- parallelle schroeven met kombi-kop en reeds geopende contacten



Neutrik NAC3MX-W



## User Manual

International Extension Cord (powercable)for 230VAC / 16A

Push and rotate the Neutrik connector NAC3MX-W in a corresponding contra connector or chassis-part until the connector locks. Push yellow button and rotate until the connector unlocks, then pull out the connector.



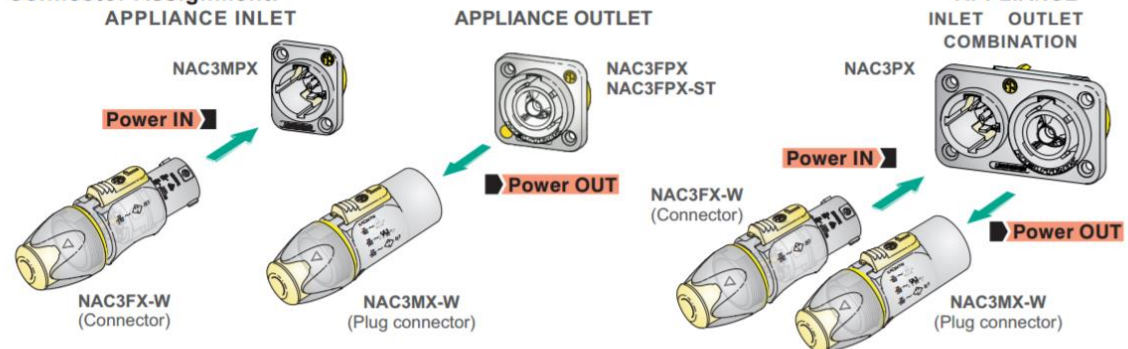
# OPERATING & ASSEMBLY INSTRUCTION NAC3FX-W | powerCON TRUE1

## A. OPERATING INSTRUCTION

### Application:

The powerCON TRUE1 system is certified as connector with breaking capacity according IEC 60320, VDE 0625. It is intended for use as appliance couplers and interconnection couplers. It serves to supply power to an appliance and from an appliance to another equipment. To be installed by qualified person only.

### Connector Assignment:



<b>Approval based:</b>	<b>VDE</b> EN 60320-1/EN60320-2-2	✓	<b>UL</b> UL 498 / CSA C22.2 No. 182.3	✓
<b>Rating:</b>	250 V ac / 16 A		250 V ac / 20 A	
<b>Cable Type:</b>	H05VV-F3G 1.0 mm <sup>2</sup> , Length max. 2 m H05VV-F3G 1.5 - 2.5 mm <sup>2</sup> H07RN-F3G 1.5 mm <sup>2</sup>		SJTOW, SJOOW 3 x 12 AWG	
<b>Strain Relief:</b>	White chuck		White chuck	
<b>Cable O.D.:</b>	6.0 - 12.0 mm		6.0 - 12.0 mm	

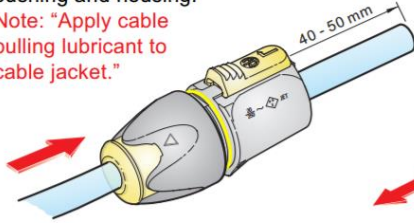
## **Technical Drawing**

**Is this drawing molded connectors are used. We use non-molded connectors assembled according the assembly instructions on Neutrik see below.**

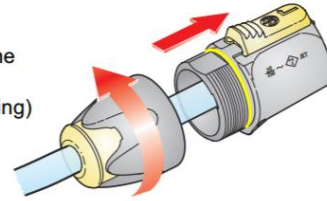
# Production/assembly information

## B. ASSEMBLY INSTRUCTION

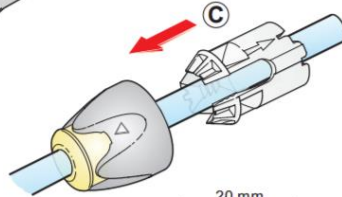
- A** Insert cable into the bushing and housing.  
**Note:** "Apply cable pulling lubricant to cable jacket."



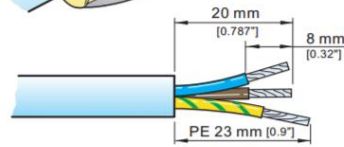
- B** Separate the housing from the bushing (cable remain in bushing)



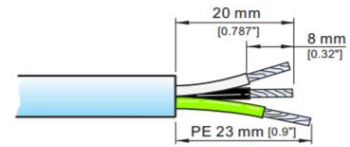
- C** Place chuck over the cable.



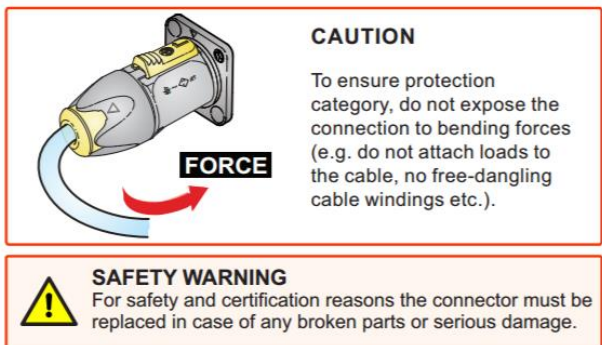
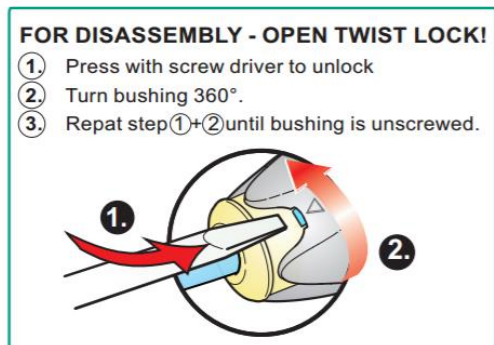
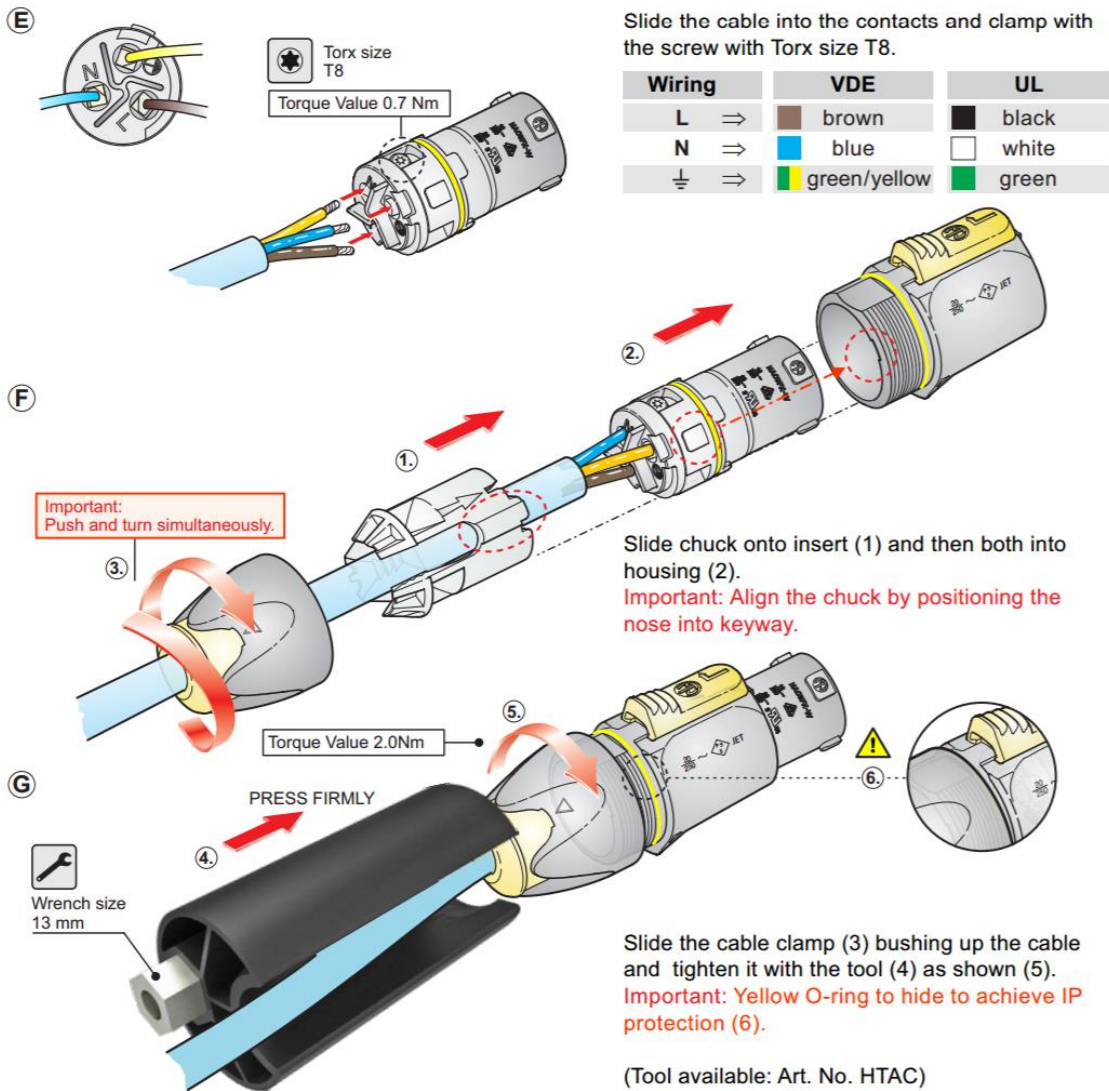
- D** Prepare cable as shown.



VDE (EN 60320-1/EN60320-2-2)



UL (UL 498 / CSA C22.2 No. 182.3)



Addition: we use cable end busses and a Knipex crimping tool: 97 53 04



## Testing:

The cable is tested according to NEN3140:

- Visual inspection
- Measure electrical values of the cable:

Measurement device used: Nieaf-Smitt EasyPat 250V NEN3140 apparaattester

Resistance protective layer (minimal: 1 M $\Omega$ )

Resistance protective conductor ( maximal: 0,3 $\Omega$  )

Max leaking current: 1mA